

TECUMSEH LOFTS™

BY



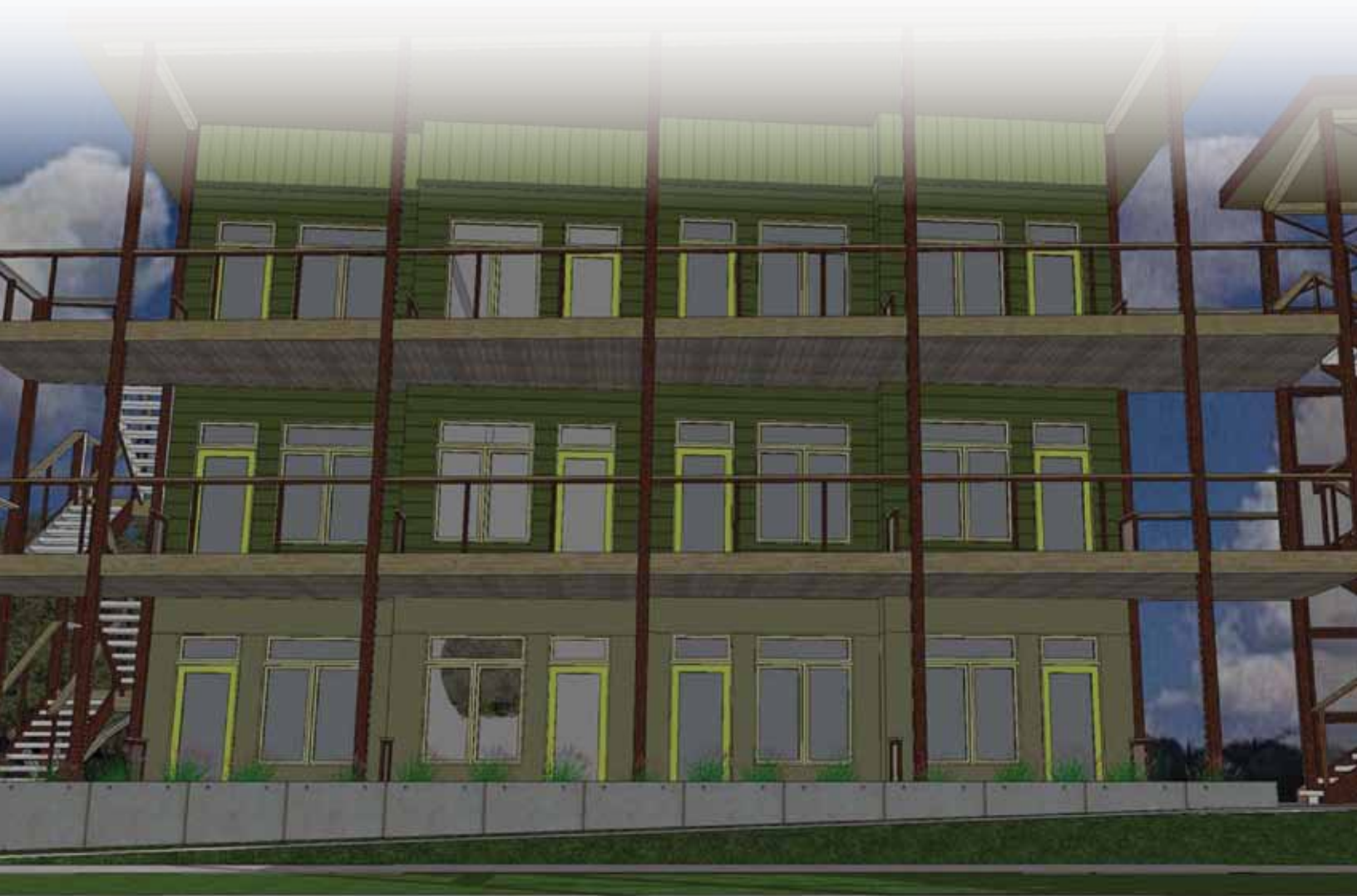
FOR LEASING INFORMATION CALL
(785)341-6000

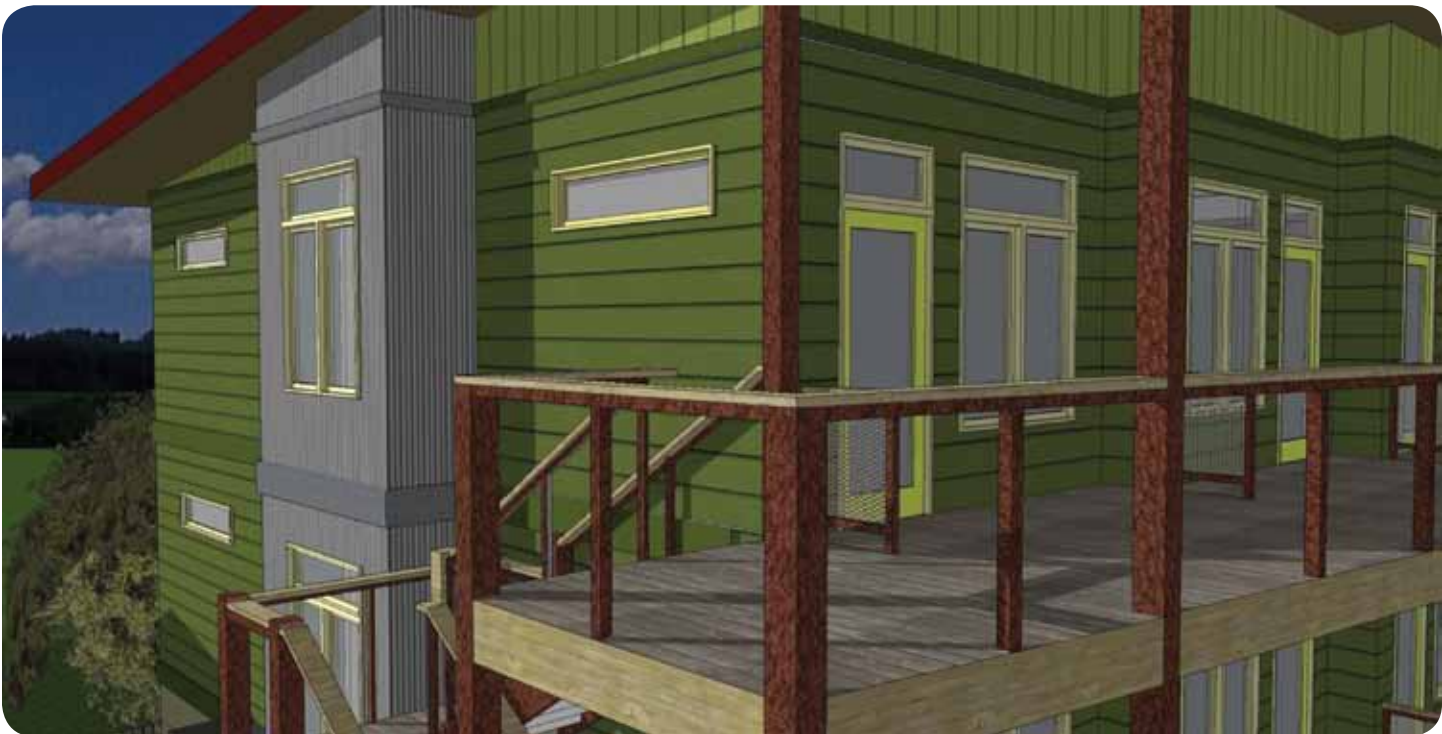
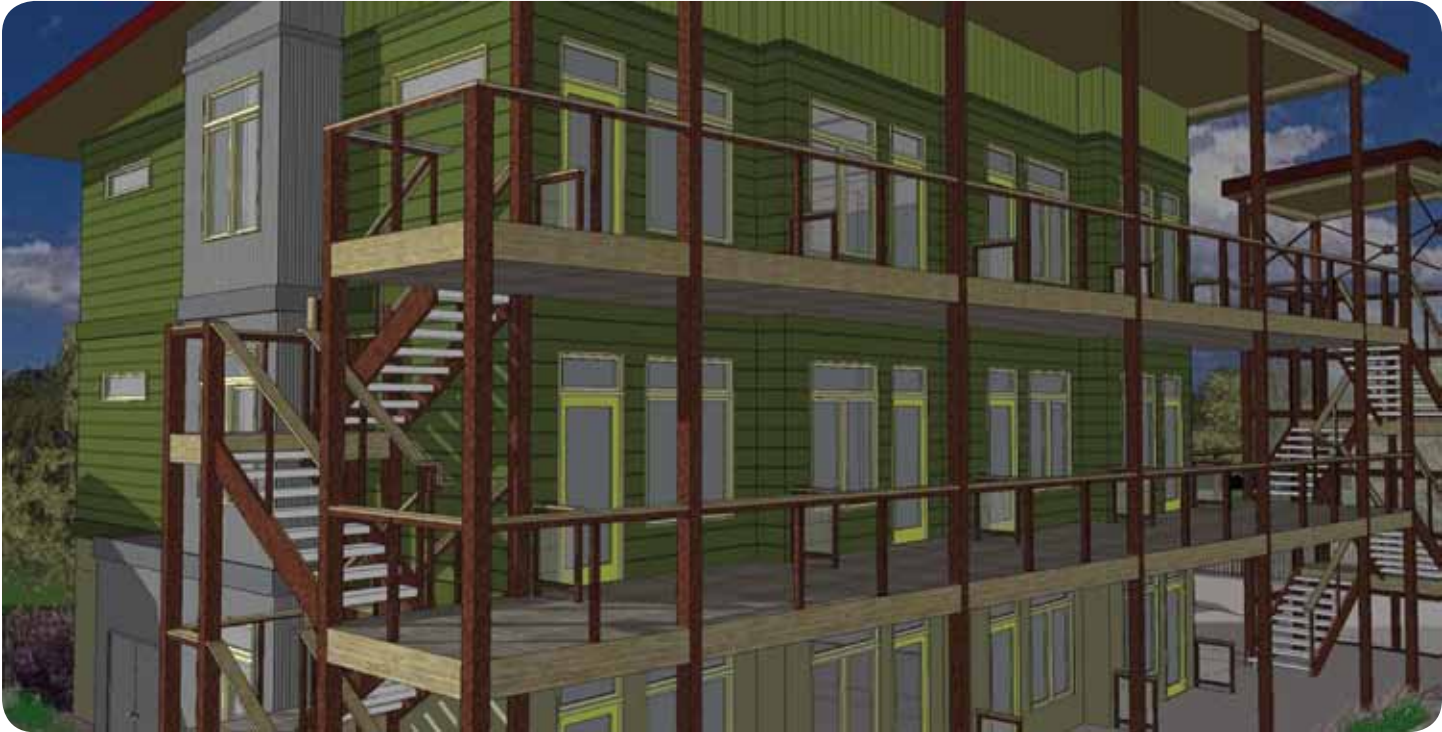
WELCOME TO TECUMSEH LOFTS

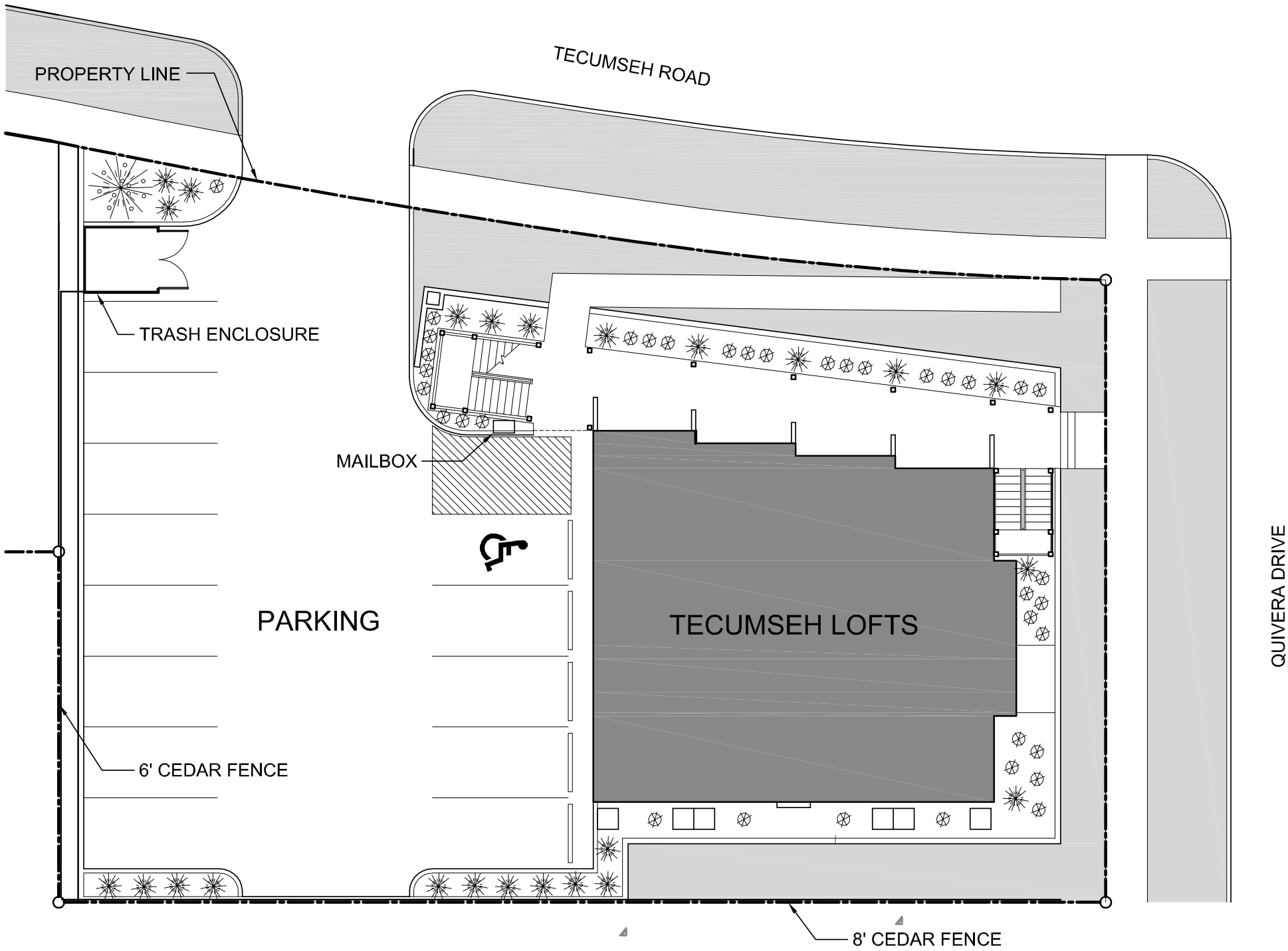
Located just a few blocks west of the KSU campus, Tecumseh offers the perfect location for those seeking walking access to the University District while living on the quieter west side of campus. Combined with its new-urban architecture and progressive floor plans, Tecumseh Lofts offers a dynamic living experience unique in Manhattan.

Tecumseh Lofts is a progressively designed living concept meant to embody the thoughtfulness and design often left out of today's commonplace apartments. Inside and out, you'll find character, modern style, and thoughtful details that make it truly one-of-a-kind.

Tecumseh Lofts is now under construction and is currently pre-leasing for August 2010 occupancy. Schedule a tour today and discover the difference.







PROPERTY LINE

TECUMSEH ROAD

TRASH ENCLOSURE

MAILBOX

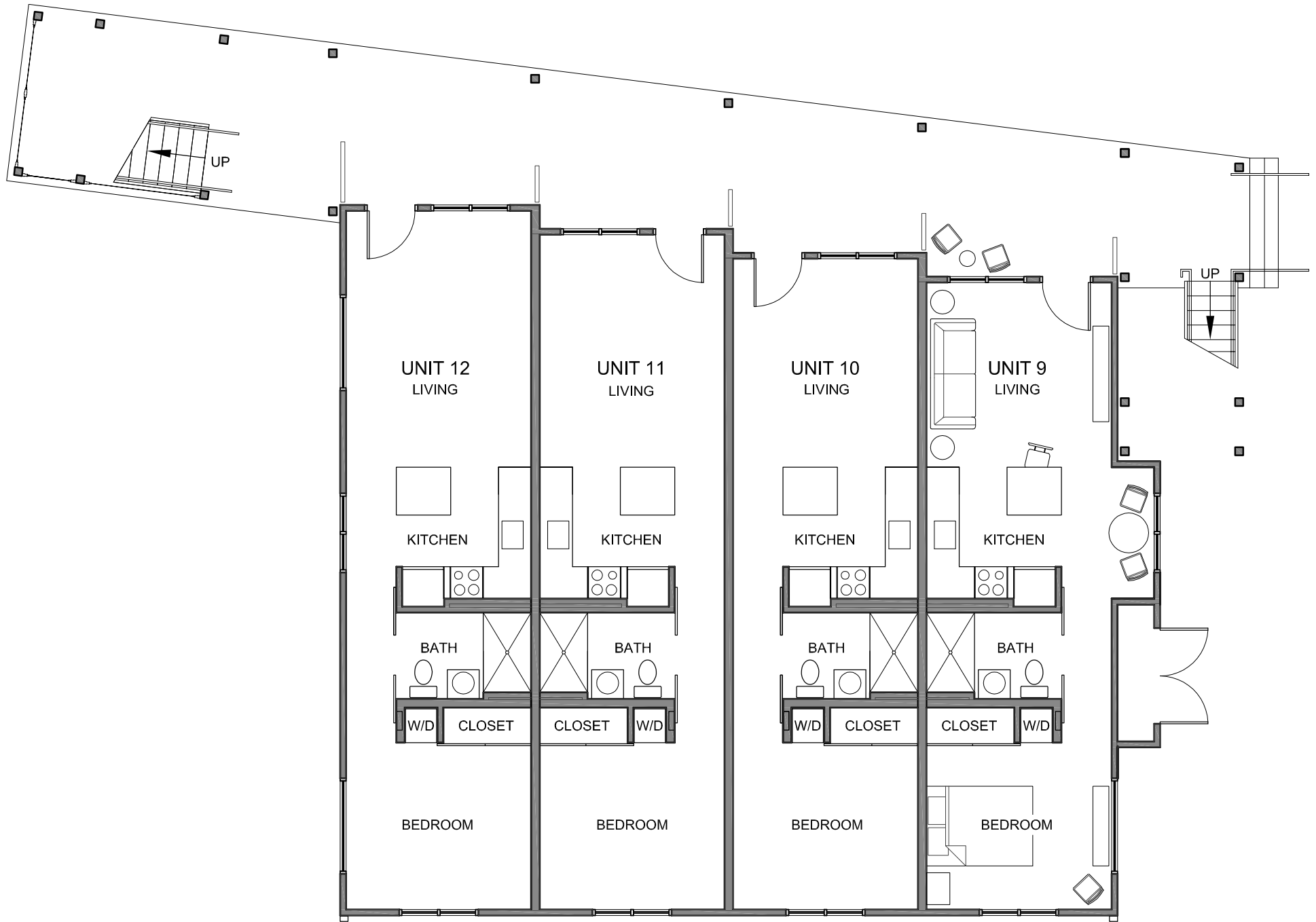
PARKING

6' CEDAR FENCE

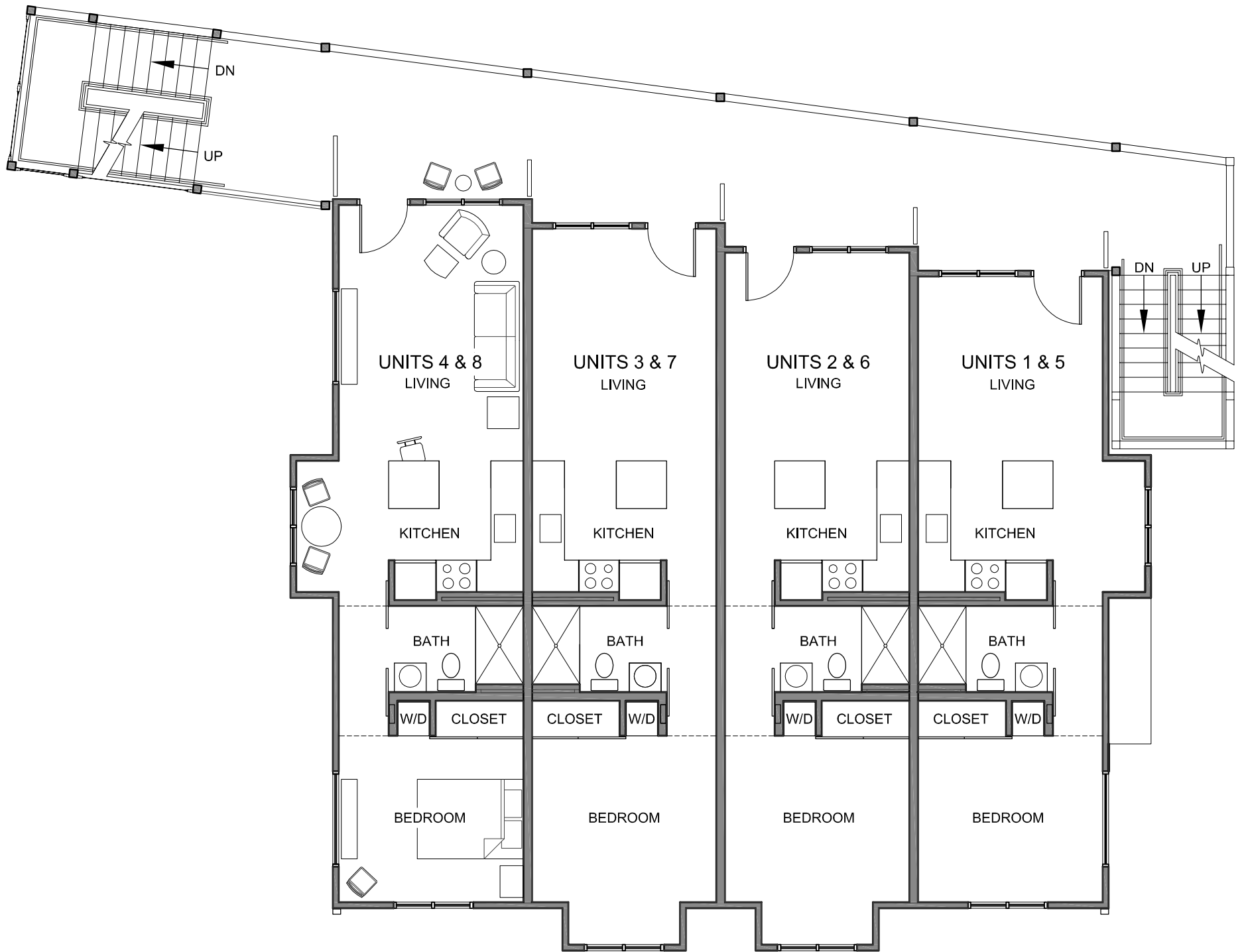
TECUMSEH LOFTS

8' CEDAR FENCE

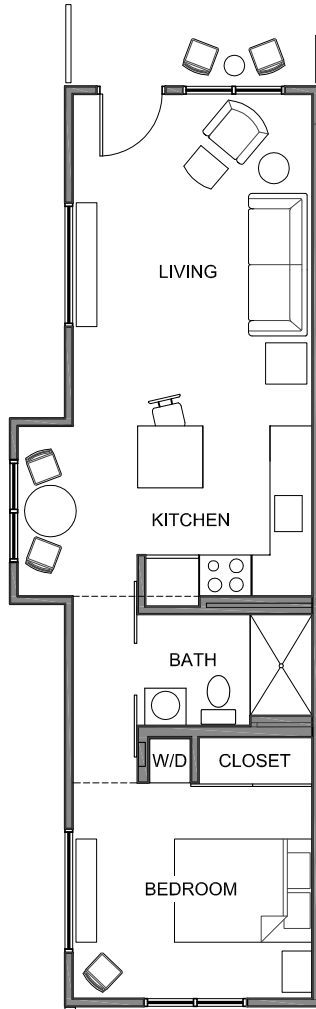
QUIVERA DRIVE



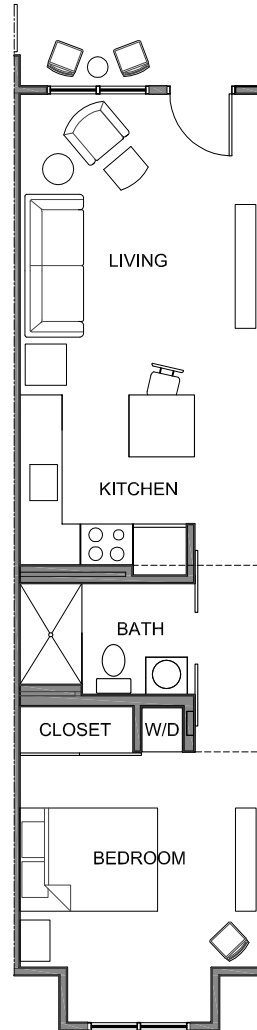
FIRST FLOOR PLAN



SECOND AND THIRD FLOOR PLANS



TYPICAL END UNIT



TYPICAL INSIDE UNIT



DETAILS ABOUND

Each of the twelve luxury units consists of one bedroom, one bathroom, and a full kitchen with island that opens into the main living area. Each unit features its own washer/dryer unit and has 10' ceilings throughout. Designed to be bright and open, each unit features a floor-to-ceiling bay window projection either off of the kitchen or the bedroom. Additionally, an extra wide outdoor balcony with privacy rail provides each resident with a usable outdoor patio.

MAIN LIVING ROOM:

- Bamboo flooring (sealed concrete on first floor units)
 - $\frac{3}{4}$ " wood base trim
 - 10' ceilings with can lights
 - Exposed spiral ductwork
- Large windows, each with transom window above

BEDROOM:

- Designer carpet
- $\frac{3}{4}$ " wood base trim
- 10' Ceilings with can lights
- Large windows, each with transom window above
 - Floor-to-ceiling bay window (in limited units)
 - Innovative "barn-door" style door divider
 - Additional storage area above closet
- Custom closet with stackable **Washer & Dryer**



KITCHEN:

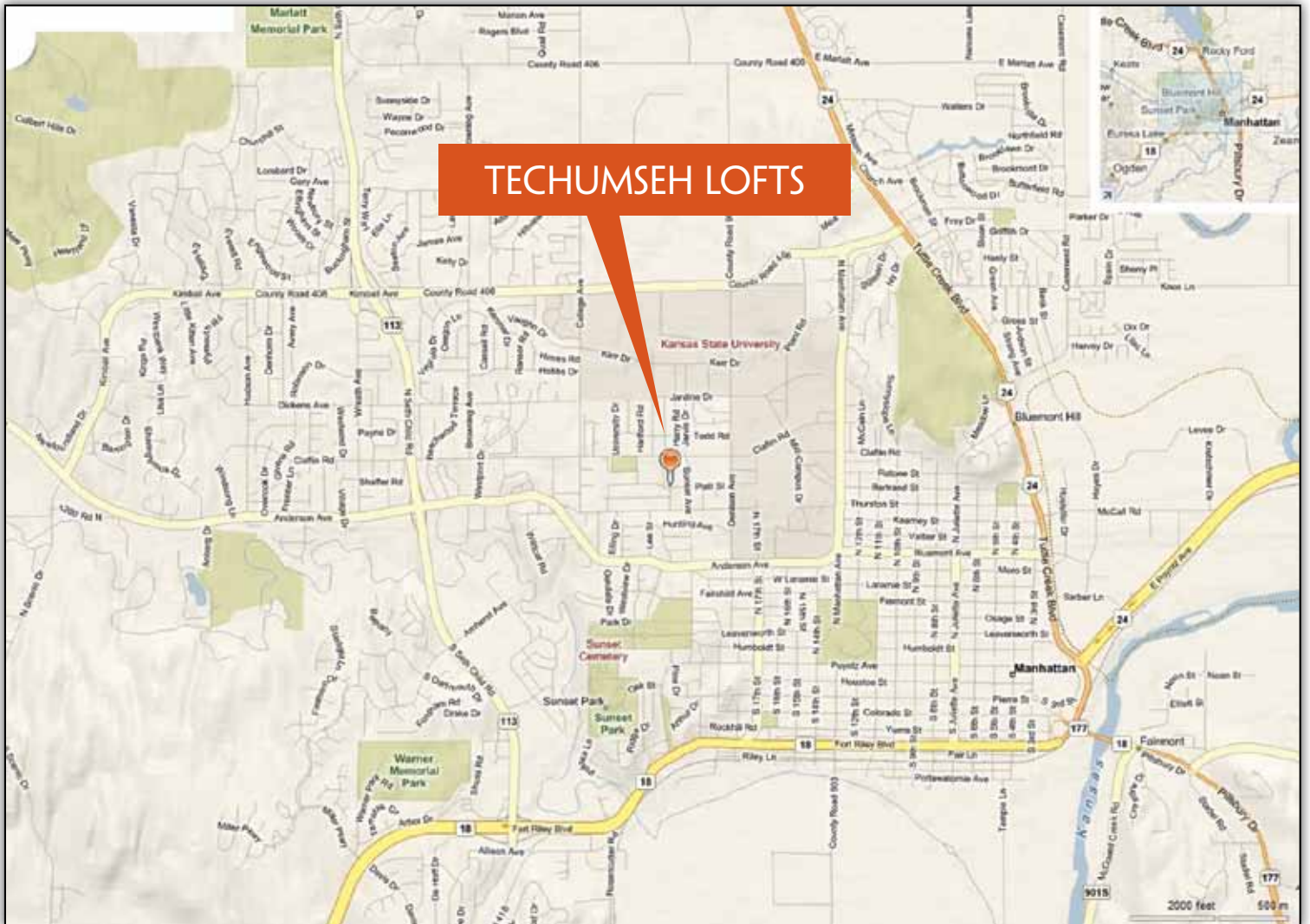
- Bamboo flooring (sealed concrete first floor)
 - $\frac{3}{4}$ " wood base trim
- 10' ceilings with can and pendant lights
 - Exposed spiral ductwork
- Large windows, each with transom window above
 - Custom cabinetry
 - Custom-designed countertops
 - Eat-in bar at kitchen island
 - Eat-in bay window (on limited units)
- Energy Star rated stainless steel appliances
 - 30" Range • Dishwasher
 - Refrigerator • Microwave

BATHROOM:

- Porcelain floor tile (sealed concrete on first floor)
- Jumbo, two-person shower with double shower heads
 - Custom-designed sink and countertop
 - Sliding "barn-door" style enclosure

OUTDOOR:

- Personal balcony space
- Landscaped personal court-yard patio (limited units)
 - Personal bike storage area
 - Private, reserved, off-street parking





LOFTS



design | build | remodel | manage | lease
Capstone3D.com